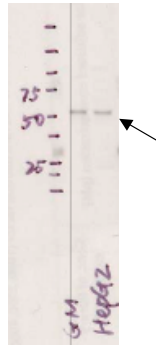


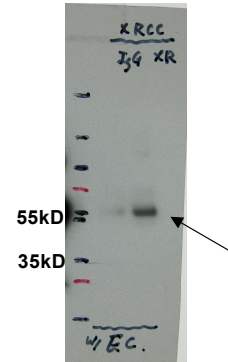
Antibody:XRCC4 Source: Abcam ab145
Epitope: Rabbit polyclonal; Recombinant full length protein (Human)

Validation 1: Immunoblotting

Arrow indicates main band observed in Western blot using ab145. Lane 1: nuclear lysate from GM12878 cells, Lane 2: nuclear lysate from HepG2 cells. Note that band is slightly larger than predicted size (38kD) of XRCC4. This is observed in all cell lines (see blot at right) and in the production characterization literature.



Arrow indicates immunoprecipitated band from HeLaS3 nuclear lysates. Lane 1= bound material from IgG control IP from HeLaS3 nuclear lysate, Lane 2= bound material from ab145 IP from HeLaS3 nuclear lysate. Because of the size of XRCC4 band, the ExactaCruz reagent from Santa Cruz Biotechnology was used to prevent IgG heavy and light chains from appearing in the blot.



Validation 2: In Progress